

جامعة الخرطوم  
كلية الدراسات العليا  
كلية الآداب - قسم الجغرافيا

بحث مقدم لنيل درجة الدكتوراه في الجغرافيا

إعداد

مرزوق محمد عبد العالي

إشراف

دكتور عبيد سرور العتيبي

دكتور يعقوب عبد الله محمد

يناير 2005

... )

—

)

(

(113

.

.

.

.



1932

600

25

## *Abstract*

Economic and social developments has been accelerated by the discovery and exploitation of oil resources in the state of Kuwait . the fast economic growth enhanced population growth and created an enormous demands for labour which have been satisfied by recruitment of foreign workers . Economic growth also included expression of health , education and housing services Municipality of Kuwait which established in 1932 has contributed to the country's economic growth where it has initiated and promulgated laws and regulations to protect food .

Being located within a desert environment , state of Kuwait lacks water resources and agricultural potential . It depends on food import to satisfy it's total annual demands . This has enhanced establishment of a large number of food markets . It has also necessitated promulgation of laws . regulation and legislation to insure proper food inspection , storage , handling and appropriateness of food materials for human consumption . This has further increased the role of Kuwait Municipality .

therefore the researcher deductively selected this study which aimed to know the degree of awareness for the Kuwaiti people with the environmental laws which appertaining to food protection and protection safety of food for the Municipality of Kuwait . This study began with the diagnostic stage to specify the problem of food



protection, and concentration to the importance of food and its cleanness and the role of Municipality in the safety and protection of the food after showed important laws which appertain with environment in general and with food in specific. To fulfil the objectives of the research a descriptive and analytical methodology was adapted to analysing data which been collected through the questionnaires papers which included 25 questions distributed for 600 samples from both sex after cooperative societies have been selected in order to be connecting link to the field of study due to its relation with food besides the societies spreading in every area of Kuwait. Therefore the researcher selected six cooperative societies which have been selected per one from the six provinces of Kuwait.

The questionnaires were analyzed using spss-pc program .  
Then finding of the analysis indicate that :

There is a huge vacuum between what the Municipality accomplished and the span of people awareness with that services

Absence of awareness of laws and regulations which organized the standards of food preservation and storing., and also there are absence of awareness of restricted banned food's laws.

Consensus of the press role in spreading the food awareness and updated decisions.

The study concluded by presenting recommendations and suggestions for future researches in the food awareness and awareness studies in general .



6	2 - 1
7	3 - 1
7	4 - 1
8	5 - 1
8	6 - 1
11	7 - 1
15	8 - 1
16	1 - 8 - 1
17	9 - 1
17	10 - 1
18	11 - 1

18	12 - 1
21	- 2
21	1 - 2
24	2 - 2
25	3 - 2
28	4 - 2
29	5 - 2
30	6 - 2
30	1 - 6 - 2
32	2 - 6 - 2

52	3 - 6 - 2
60	7 - 2
63	- 3
65	1 - 3
66	2 - 3
67	3 - 3
69	4 - 3
72	5 - 3
73	6 - 3
73	1 - 6 - 3

80	7 – 3
84	8 – 3
98	9 – 3
101	10 – 3
104	11 – 3
105	12 – 3
107	13 – 3
108	14 – 3
109	15 – 3
112	– 4

112	1 - 4
114	2 - 4
115	3 - 4
116	4 - 4
116	1 - 4 - 4
118	2 - 4 - 4
120	3 - 4 - 4
122	4 - 4 - 4



123	$5 - 4 - 4$
125	$6 - 4 - 4$
127	$7 - 4 - 4$
129	$8 - 4 - 4$
131	$9 - 4 - 4$
132	$10 - 4 - 4$

134	$11 - 4 - 4$
136	$12 - 4 - 4$
137	$13 - 4 - 4$
139	$14 - 4 - 4$
140	$15 - 4 - 4$
141	$16 - 4 - 4$

143	$17 - 4 - 4$
145	$18 - 4 - 4$
147	$19 - 4 - 4$
148	$20 - 4 - 4$
150	$21 - 4 - 4$
151	$22 - 4 - 4$

153	5 - 4
157	1 - 5
158	2 - 5
158	1 - 2 - 5
152	2 - 2 - 5
159	3 - 5
160	
170	

2	( 1 - 1 )
12	( 2 - 1 )
13	( 3 - 1 )
13	( 4 - 1 )
68	( 1 - 3 )
112	( 1 - 4 )
113	( 2 - 4 )
114	( 3 - 4 )
114	( 4 - 4 )

115	(5 - 4)
116	(6 - 4)
116	(7 - 4)
117	(8 - 4)
118	(9 - 4)
119	(10 - 4)
120	(11 - 4)

121	(12 - 4)
122	(13 - 4)
122	(14 - 4)
123	(15 - 4)
124	(16 - 4)
125	(17 - 4)

126	(18 - 4)
127	(19 - 4)
128	(20 - 4)
129	(21 - 4)
130	(22 - 4)
131	(23 - 4)



132	(24 - 4)
132	(25 - 4)
133	(26 - 4)
134	(27 - 4)
135	(28 - 4)
136	(29 - 4)

137	(30 - 4)
137	(31 - 4)
138	(32 - 4)
139	(33 - 4)
139	(34 - 4)
140	(35 - 4)

140	(36 - 4)
141	(37 - 4)
142	(38 - 4)
143	(39 - 4)
144	(40 - 4)
145	(41 - 4)

146	(42 - 4)
147	(43 - 4)
148	(44 - 4)
148	(45 - 4)
149	(46 - 4)

150	(47 - 4)
150	(48 - 4)
151	(49 - 4)
152	(50 - 4)
17	( 1 - 1 )
153	( 1 - 4 )
154	( 2 - 4 )
155	( 3 - 4 )

. -1  
: 1 -1

45  
51 8  
. (13 1985 ) 6

( )  
- ) 1164.320 1999  
. (1999

1965 467339  
. (1-1 ) 1995 1575983

. 2000                      45    1969                      13

(1 -1)

(1995 – 1965)

%				
36,1	467339	298546	168793	1965
30,9	994837	687082	307755	1975
27,7	1697301	1226828	470473	1985
41,6	1575983	920163	655820	1995

. 1996

:



. 72/15

23

( )

) )

(

.(9 1981 ) .

1997

%98

2000

.

:

**2-1**

.

: **3-1**

:  
(1

(2

(3

: **4-1**

- 1

- 2

- 3

- 4

: 5-1

.

6-1

: ( )

-

:

(2 ) 27 / 51 1

( 34 )

500

(35)

:(2 ) 29 / 12 - 2

32 ( )

(3)

(4)

(8)

(6 5 3)

:

- 3

. (3 ) .

: -

.

: ( )

.

(1 ) 25

"

) "

. (421 1992



7 - 1

:

45

-1

2000

246325

21

.(2 -1)

(2-1)

55232	17	
38642	6	
46579	8	
61763	9	
25891	3	
18218	2	
246325	45	

. 2000

:

-2

.(3-1)

6

-3

:

.

:

—

:

—

:  
:  
:  
:

(3-1)

17	
6	
9	
2	
8	
3	

2000

- 4

. (4-1)

48362

(4-1)

<b>6191</b>	<b>2701</b>	<b>3490</b>		
<b>4369</b>	<b>1876</b>	<b>2943</b>		
<b>8519</b>	<b>3622</b>	<b>4897</b>		
<b>11035</b>	<b>4327</b>	<b>6708</b>		
<b>9317</b>	<b>4246</b>	<b>5071</b>		
<b>8931</b>	<b>3729</b>	<b>5202</b>		

2000

:

- 5

100

600

50

50

50

50

10

.

**8 - 1**

"

. (32 1984 )"

:

25

3

-1

. 22

-2

**1 - 8 - 1**

:

.

..

-1

.

-2

.

.

.

-3

.

.

.

.

100

(1-1 )

.

( 1 - 1 )



( 1994 ) :

9 - 1

( Excel )

. spss

: 10-1

2000-

: **11-1**

**12 - 1**

: **Awareness**

)

:

.(



:

.

:

.



0

1 -2

Consciousness

( 18 1992 )0

0 unconscious

( )

( ) ( )

1950

0 (Eric Kilinger ) (Ernest Hilgard )

(Pope Kenneth ) (Veis Krants

21 1992 )

(

awareness

)

((

((

( 954 )

:

(( ))

(( ))

(( ))

0

( )

)

0 (96 1988

receiving

0 formal

Responding

0

(( ))

Valuing

)attitude

0 (46 1998

**2 - 2**

( )

000) (256 )

0 (

( ) 0

**3 - 2**

:

( ) -1

-:

0 -

0 -

0 -

-

0

-2

0

-3

( )

0

( )

0

( )

( )

0

-:

-1

0

-2

0

-:

-3

0

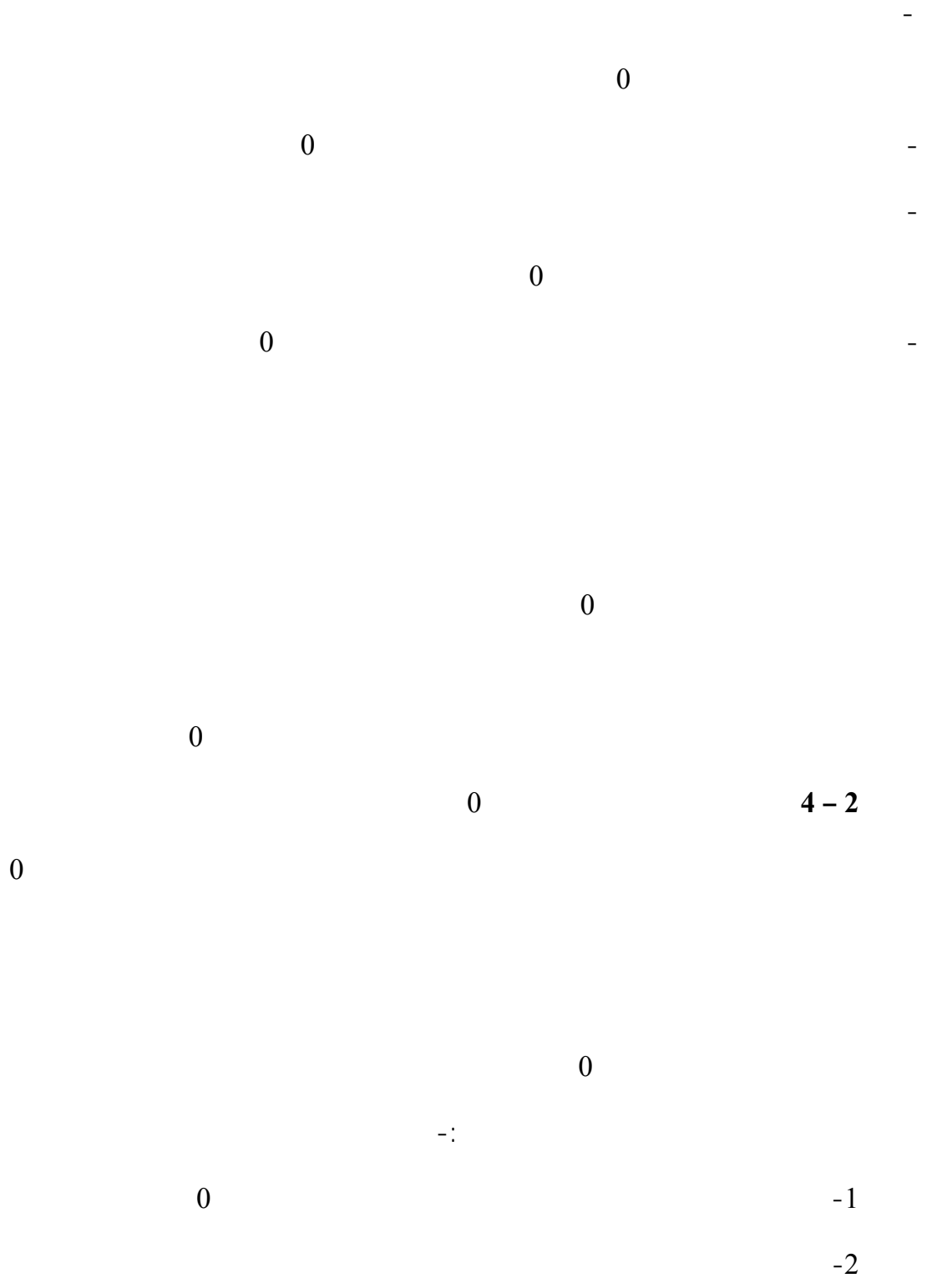
-

0

-

0

-



( 80 ) 0

0

-3

0

0

**0**

**5 -2**

-:

-1

0

-2

0

-3

0

**0**

**6-2**



-

0

-

0

0

0

1-6-2

( Sobal,1985 )

(Wright,1989 )

(( ))

0

Smith (1989)

%53

%47

1747

(Kilen,1993 )

1606

0

15

(Lopez,2000 )

**2-6-2**

( 1984)

-:

-1

0

0

-2

0

" "

-3

0

0

-4

0

"

"

(1988)

0

0

0

0

(1987)

-:

-1

0

-2

0

0

-3

-:

:

-1

)

(

0

(1989)

:

0

-1

-2

0

0

-3

:

0

-1

-2

0

0

-3

0

-4

"

0

"

"

"

( 1990)

0

( 1990)

"

(1985)

0 "

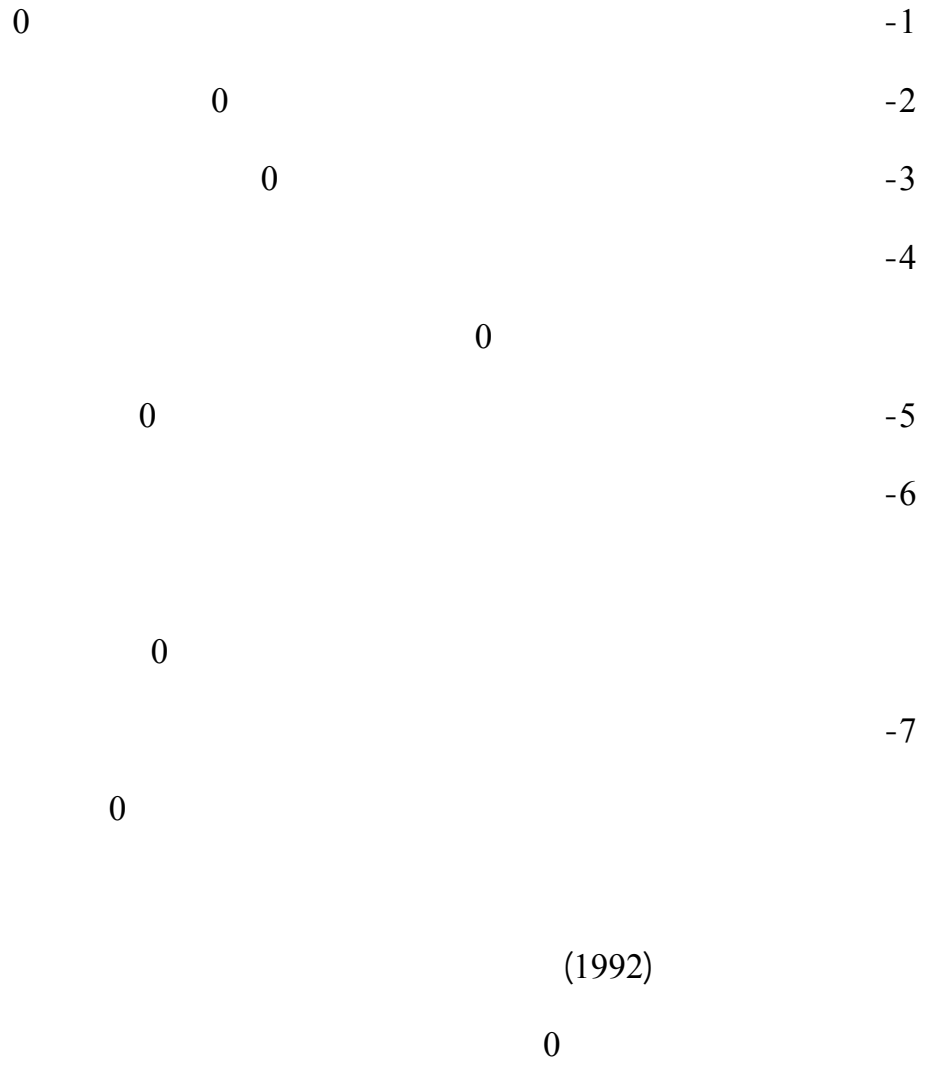
0

0

:

(1992)

"



500

:

(

0

(

0

(

0

0

(1996)

( )

832

0 -

%53

%26

%21

0

%38

%30

0

%11 ( )

%73

%16

: ( )

%93

0

%8

0

(1998)

:

( )

-1

0( )

-2

0( )

-3

0

-4

( )



18

0

%69

207

%48

%45

0

(1998)

90

0

0

( 2001 )

295

0

) (

)

0 (

( 28 22)

)

0

%80

0 (

)

0 (

0

%66

0

0

0  
0  
( )  
- %80  
0  
(%46)  
%80  
0  
0  
0  
(2001)  
0  
0

400

%67 ( ) 0

0

% 42.5

( %72.5)

( 21.5)

0

(%60)

(%47)

(%92)

0

%63

0

0

(2001 )

0

240

60

0

0 (Step-Wise )

: 0 ( )

( ) % 68.33 -1

%48.33

( ) %34.16

0 %19.17

-2

0

) -3

(

0 %15.38

-4

(%18)

0

-5

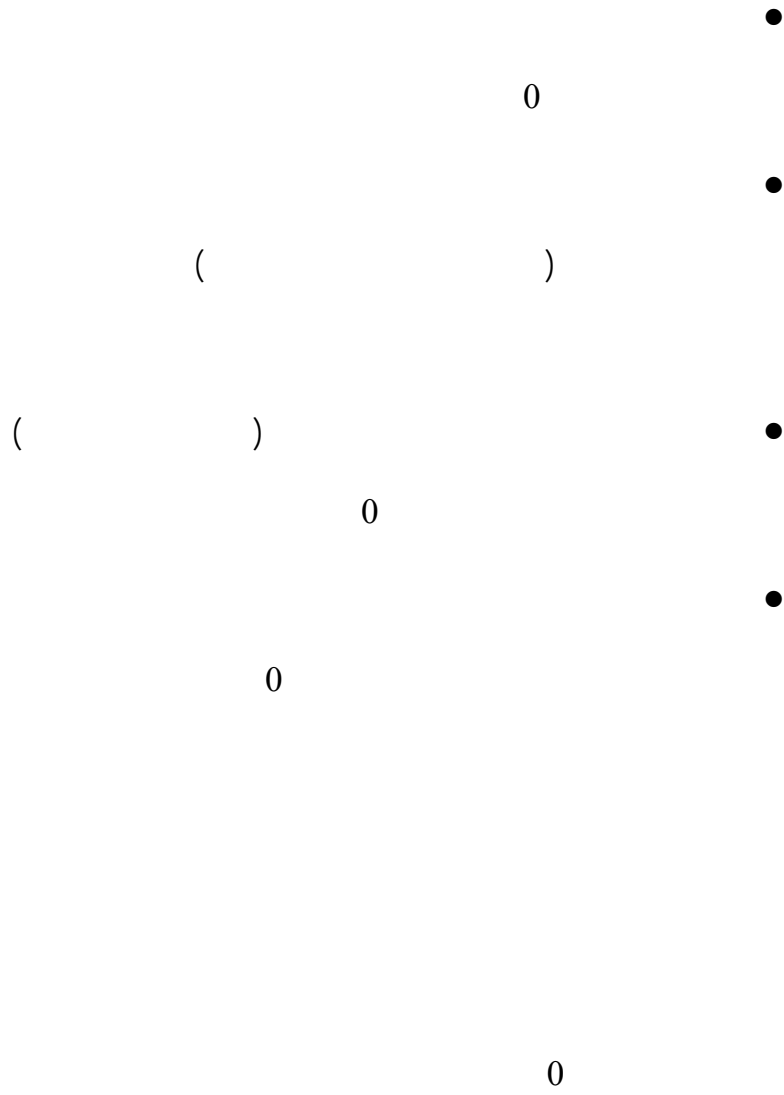
0

( 2001 )

0

0

-:



- -

0

3-6-2

(1988)

:

-1

-2

-3

-4

300

35

-:



		-1
		-2
		%72
.	%80	-3
.	%60	-4
%86		-5
		-6
		-7

( 1987)

375

.(( - - - - )):

:

:

:

-1

-

-

-2

-3

( 1989)

(41)

:

( - )

-1

-2

-3

(25)

(25)

50

(%6)

(15)

:

%74 -1

%96 -2

-3

(%87)

-4

(%87)

( 1992 )

1096

( 1993 )

651

Random Sampling Multistage

( 1994 )

455

7 -2

**-1**

( 1989 ) Wright ( 1985 ) Sobal

. ( 1993 ) ( 1989 ) ( 1988 )

**-2**

) Smith

( 1992 ) (2001) ( 1996 ) ( 1989

**-3**

( 1987 ) ( 1993 ) Kilen

( 1994 ) ( 1998 ) ( 1992 )

. ( 1995 )

) **-4**

( 2001 ) ( 1998

**-5**

-

-



: - 3

)

( )

(

( )

.

(9 )

3000

400

3200

3200

15-13

2700

-7

2800

2000

9

40

70

.



)

.

45

)(

.(

:

.

.

% 50

( 12 1992 )

%30

.

.

1 - 3

.

.

2-3

:

( 15 )

.Fungi

Yeast

Bacteria

:

-:

3 -3

Germ

:

( 14 )

( 47 1987 )

4

500

( 1-2 )

جدول ( 1-3 ) يوضح حالات الإصابة بميكروب السالمونيلا

1981				<b>654</b>
1981				<b>500</b>
1982				<b>245</b>
1982			نابولي	<b>126</b>
1984				<b>274</b>
1984				<b>2000</b>
1984				<b>450</b>
1985				<b>150</b>
1985				<b>20000</b>
1985				<b>60</b>

( 47 1987 )

1200

( 247 )



) 17.000 15.000  
( 17 1981

( 45 1987 ) .

1200

. 250

.

.

.

**1967**

.

( 41 1987 ) .

( 53 )

( 28 )

.

( 30 )

.



.

5 - 3

.

.

.

.

.

6- 3

.

1 - 6-3

"

.(41 )"

3 1988) .

.(

1965

)

( 19 1998

-

1968

113

1972

The United Nations Environment program ( UNEP )

1972 15

)

. ( 13 1992

1975

.

. ( 86 1986 )

1977

. ( 17 1988 )

.

-:

12-5

- 1

. 1972

.

.

- 2

1974 12 -5

1988 20 - 17 - 3

- 4

1978

1978

1989

. 1990

- 5

1978

1982

. 1986

- 6

1986

1991

- 7

( )

- 8

2000

25 - 23



(17 – 13 )

161/38

1982

(( ))

The world commission on Environment Development

1984

)

( UNEP )

. ( 13

1992

Rio de janriro

(Earth )

summit

7 - 3

1964 12 - 1

64 12

(5)

1500

40.000

: 1964 38 - 2

.  
:  
1965 6 - 3

1979 /40

.  
1973 9 - 4

1977 131 - 5

:

·  
:  
1980 46 - 6

·  
:  
1995 21 -7

( 19 )

( 3 )

1996 (16)

(4)

.

(6)

(7)

.

.

(2 )

8 -3

1972 5 -1

1964

.

.

-:

(19)

.

(20)

:

-1

-2

-3

-4

1972

(34)

-:

-1

-2

-3

-4

. -5

. -6

. -7

1972 15

(34) (19)

.

1992 21 - 2

1981 3368

.

(23)

(3)

.

:

(4)



-1

-2

-3

-4

-5

-6

-7

-8

(8)

( 6 5 3 )

**1981 3370 - 3**

( 2 )

(4)

(7)

(7)

(8)

**1982 7 - 4**

(1)

**2000      1999**

**1999 / 15      - 5**

.

**1999 / 36**                      - 6

-:

. ( E 104 )                      -1

. ( E 124 )                      4                      -2

.

**1999 / 32**                      - 7

.

**99 / 33 - 8**

2001 / 8 / 3

1999 / 8 / 4

(21)

.

**99 / 38 - 9**

( )

.

.

( 10 ) **2000 / 8 - 10**

.

. ( )

.

3

.

**2000 / 9 - 11**

.



**2000 / 12 - 12**

( )

**2000 / 13 - 13**

**2000 / 16 - 14**

. **2000 / 19** - **15**

-

Shark ( )

.

**2000 / 20** - **16**

**2000 / 22** - **17**

( )

( ) 2000 / / 1

. ( ) E123

.



( ) 2000/44 - 22

9 - 3

. 45

)

(

. ( 11 1981 )

8

30

10 - 3

∴ (43 1990)

-1

-2

-3



.

.

.

-:

-

.

-

-4

.

.

**11 - 3**

1930

:

.1931

-1

.1954

-2

.1960 -3  
. 1962 33 62 / 31 -4  
. 1964 11 -5  
. 1972 / 15 -6  
0 **12 -3**  
-1  
1930  
1954 -2  
( )  
0 -:  
1960 20 -3

"

"

0

-:

1964

-4

0

-

**0**

-

0

0

1972 15

1972

0

1983 -5

)

(

0

0

**13 - 3**

0

0

%90

( 96 1998 )

0

0

0

**14 - 3**

( )

-:

-1

0

-2

0

-3

-:

0

-

0

-

0

-

0  
0  
0  
0  
0

-  
-  
-  
-  
-

0

0

**15 - 3**

0

0

-:

-1

-2

0 ( )

-3

0

0

-4

-5

0

-6

0





: - 4

1 - 4

(1 - 4)

---

50 49 - 40 39 - 30 30

---

%14 7 %22 11 %46 23 %18 9

---

---

**%18 9    %26 13    %34 17    %22 11**

**%32 16    %24 12    %32 16    %12 6**

**%32 16    %22 11    %33 17    %12 6**

**%26 13    %36 18    %24 12    %14 7**

**%38 19    %42 21    %14 7    %6 3**

---

**:**

**( 1 - 4 )**

**% 22**

**30**

**. % 6**

**%14**

**% 46**

**39 - 30**

**.**

**( 39 - 30 )**

**.**

**% 42    ( 49 - 40 )**

**% 22**

(2 - 4)

---

50	49 - 40	39 - 30	30
%6 3	%28 14	%52 26	%14 7
%18 9	%26 13	%34 17	%22 11
%20 10	%28 14	%36 18	%16 8
	%6 3	%38 19	%56 28
%2 1	%22 11	%42 21	%34 17
%4 2	%16 8	%68 34	%12 6

---

30

:

(2 - 4)

% 68

39

% 56

30

. % 10

2- 4

( 3 - 4 )

<b>% 6</b>	<b>3</b>	<b>%94</b>	<b>47</b>
<b>% 36</b>	<b>18</b>	<b>% 63</b>	<b>32</b>
<b>% 18</b>	<b>9</b>	<b>% 82</b>	<b>41</b>
<b>% 22</b>	<b>11</b>	<b>% 78</b>	<b>39</b>
<b>% 8</b>	<b>4</b>	<b>% 92</b>	<b>46</b>
<b>% 26</b>	<b>13</b>	<b>% 74</b>	<b>37</b>

:

( 3 - 4 )

.

( 4 -4 )

<b>%16</b>	<b>8</b>	<b>%84</b>	<b>42</b>

<b>%24 12</b>	<b>%76 38</b>	
<b>%22 11</b>	<b>%78 39</b>	
<b>%26 13</b>	<b>%74 37</b>	
<b>% 38 19</b>	<b>%62 31</b>	
<b>% 14 7</b>	<b>%86 43</b>	

:

( 4 - 4 )

% 19

% 86

.

3 -4

( 5 - 4 )

<b>%12 6</b>	<b>%74 37</b>	<b>%14 7</b>	<b>%0 0</b>	
<b>%36 18</b>	<b>%56 28</b>	<b>%8 4</b>	<b>%0 0</b>	
<b>%4 2</b>	<b>%72 36</b>	<b>%24 12</b>	<b>%0 0</b>	
<b>%42 21</b>	<b>%58 29</b>	<b>%0 0</b>	<b>%0 0</b>	
<b>%14 7</b>	<b>%40 20</b>	<b>%44 22</b>	<b>%2 1</b>	
<b>%6 3</b>	<b>%34 17</b>	<b>%54 27</b>	<b>%6 3</b>	

:

( 5 - 4 )

% 74

( 6 - 4 )

% 8 4	%74 37	%18 9	% 0 0	
%26 13	%42 21	%24 12	%8 4	
%18 9	%50 25	%32 16	% 0 0	
%34 17	%62 31	% 4 2	% 0 0	
%4 2	%54 27	%34 17	%8 4	
%4 1	% 40 20	%54 27	%4 2	

:

( 6 - 4 )

. % 38

%62

4 - 4

1- 4 - 4

(7 - 4)

%2 1	%18 9	%8 4	%72 36	
%6 3	%34 17	%8 4	%52 26	
%8 4	%26 13	%18 9	%48 24	
%2 1	%16 8	%4 2	%87 39	
---	%32 16	%2 1	%66 33	
%8 4	%16 8	%32 16	%44 22	

:

(7 - 4)

300

%32

%34

(8 - 4)

%4 2	%20 10	%26 13	%50 25	
%8 4	%18 9	%38 19	%36 18	
%8 4	%30 15	%36 18	%26 13	
%8 2	%14 7	%22 11	%60 30	
%16 8	%26 13	%34 17	%24 12	



<b>%18 9</b>	<b>%4 2</b>	<b>%58 29</b>	<b>%20 10</b>	
--------------	-------------	---------------	---------------	--

:

( 8 - 4 )

% 58

% 22

**2 - 4 - 4**

( 9 - 4 )

<b>%8 4</b>	<b>% 4 2</b>	<b>%88 44</b>		
<b>%24 12</b>	<b>%14 7</b>	<b>%62 31</b>		
<b>%6 3</b>	<b>-%2 1</b>	<b>%94 47</b>		
<b>%18 9</b>	<b>%0 0</b>	<b>%82 41</b>		
<b>%14 7</b>	<b>%8 4</b>	<b>%78 39</b>		
<b>%8 4</b>	<b>%0 0</b>	<b>%92 46</b>		

:

( 9 - 4 )

%82

%92

% 94

% 78

% 88

%14

%24

( 10 - 4 )

<b>%6 3</b>	<b>%0 0</b>	<b>%94 47</b>	
<b>%30 15</b>	<b>%12 6</b>	<b>%58 29</b>	
<b>%8 4</b>	<b>%4 2</b>	<b>%88 44</b>	

<b>%14 7</b>	<b>%0 0</b>	<b>%86 43</b>	
<b>%14 7</b>	<b>%2 1</b>	<b>%84 42</b>	
<b>%4 2</b>	<b>%0 0</b>	<b>%96 48</b>	

:

( 10-4 )

**%58**                      **%94**                      **%96**                      **%88**  
**%86**

**3 -4-4**

( 11-4 )

<b>%24 12</b>	<b>%34 17</b>	<b>%42 21</b>	

<b>%12 6</b>	<b>%66 33</b>	<b>%22 11</b>	
<b>%28 14</b>	<b>%18 9</b>	<b>%54 27</b>	
<b>%8 4</b>	<b>%14 7</b>	<b>%78 39</b>	
<b>%6 3</b>	<b>%74 37</b>	<b>%20 10</b>	
<b>%24 12</b>	<b>%42 21</b>	<b>%34 17</b>	

:

(11- 4)

**%66**                      **%74**                      . (1 - 4)

.                      **%42**

**%54**

**% 78**

50

**( 12- 4)**

<b>%24 12</b>	<b>% 22 11</b>	<b>% 54 27</b>	
<b>%12 6</b>	<b>%24 21</b>	<b>%46 23</b>	

<b>%14 7</b>	<b>%24 12</b>	<b>%62 31</b>	
<b>%10 5</b>	<b>%14 7</b>	<b>%76 38</b>	
<b>%12 6</b>	<b>%62 31</b>	<b>%26 13</b>	
<b>%30 15</b>	<b>%32 16</b>	<b>%38 19</b>	

:

( 12- 4)

%76

% 62

. % 26

% 30

%62

.

**4 - 4- 4**

**( 13 - 4)**

.

<b>%26 13</b>	<b>%74 37</b>	

<b>%8 4</b>	<b>%92 46</b>	
<b>%36 18</b>	<b>%64 32</b>	
<b>%10 5</b>	<b>%90 45</b>	
<b>%34 17</b>	<b>%46 23</b>	
<b>%46 23</b>	<b>%54 27</b>	

:  
( 13 - 4 )

% 92

( 14 - 4 )

<b>%32 16</b>	<b>%68 34</b>	
<b>%16 8</b>	<b>%84 42</b>	
<b>%58 29</b>	<b>%42 21</b>	
<b>%22 11</b>	<b>%78 39</b>	
<b>%46 23</b>	<b>%54 27</b>	
<b>%42 21</b>	<b>%58 29</b>	

:  
( 14 - 4 )

% 84

% 92

**5 - 4 - 4**

(15 - 4)

<b>%4</b>	<b>2</b>	<b>%40</b>	<b>20</b>	<b>%4</b>	<b>2</b>	<b>%52</b>	<b>26</b>	
<b>%14</b>	<b>7</b>	<b>%26</b>	<b>13</b>	<b>%2</b>	<b>1</b>	<b>%58</b>	<b>29</b>	
<b>%8</b>	<b>4</b>	<b>%40</b>	<b>20</b>	<b>%4</b>	<b>2</b>	<b>%58</b>	<b>24</b>	
<b>%36</b>	<b>18</b>	<b>%26</b>	<b>13</b>	<b>%8</b>	<b>4</b>	<b>%30</b>	<b>15</b>	
<b>%4</b>	<b>2</b>	<b>%42</b>	<b>21</b>	<b>% 0</b>	<b>0</b>	<b>%54</b>	<b>27</b>	
<b>%16</b>	<b>8</b>	<b>%20</b>	<b>10</b>	<b>%2</b>	<b>1</b>	<b>%62</b>	<b>31</b>	

:

(15 -4)

(16 - 4)

--	--	--	--	--	--

%0 0	%32 16	%0 0	%68 34	
%0 0	%36 18	%0 0	%64 32	
%0 0	%32 16	%0 0	%68 34	
%0 0	%42 21	%4 2	%54 27	
%0 0	%28 14	%0 0	%72 36	
%0 0	%18 9	%0 0	%82 41	

:

( 16 -4 )

%68

%82

.

%54

%42

%36

%32

.

**6 - 4 - 4**

( 17 -4 )



<b>%18 9</b>	<b>%34 17</b>	<b>%26 13</b>	<b>%22 11</b>	
<b>%6 3</b>	<b>%40 20</b>	<b>%36 18</b>	<b>%18 9</b>	
<b>%10 5</b>	<b>%12 6</b>	<b>%44 22</b>	<b>%34 17</b>	
<b>%16 8</b>	<b>%32 16</b>	<b>%38 19</b>	<b>%14 7</b>	
<b>%22 11</b>	<b>%16 8</b>	<b>%54 27</b>	<b>%8 4</b>	
<b>%4 2</b>	<b>%14 7</b>	<b>%56 28</b>	<b>%26 13</b>	

:

( 17 - 4 )

%54

% 56

%40

%34

%34

%22

( 18 - 4 )

<b>%18 9</b>	<b>%16 8</b>	<b>%52 26</b>	<b>%14 7</b>	
<b>%22 11</b>	<b>%12 6</b>	<b>%48 24</b>	<b>%18 9</b>	
<b>%6 3</b>	<b>%8 4</b>	<b>%62 31</b>	<b>%24 12</b>	
<b>%38 19</b>	<b>%18 9</b>	<b>%36 18</b>	<b>%8 4</b>	
<b>%10 5</b>	<b>%4 2</b>	<b>%68 34</b>	<b>%18 9</b>	
<b>%20 10</b>	<b>%6 3</b>	<b>%52 26</b>	<b>%22 11</b>	

:

( 18- 4 )

%52

%24

%18

%22

7 - 4 - 4

( 19-4)

<b>%36 18</b>	<b>%16 8</b>	<b>%4 2</b>	<b>%44 22</b>	
<b>%32 16</b>	<b>%44 22</b>	<b>%2 1</b>	<b>%22 11</b>	
<b>%22 11</b>	<b>%40 20</b>	<b>%0 0</b>		
<b>%20 10</b>	<b>%42 21</b>	<b>%2 1</b>	<b>%36 18</b>	
<b>%40 20</b>	<b>%28 14</b>	<b>%0 0</b>	<b>%32 16</b>	
<b>%18 9</b>	<b>%58 29</b>	<b>%0 0</b>	<b>%24 12</b>	

:

(19-4)

%58

%42

( 20- 4)



8 - 4 - 4

(21 -4)

%16 8	%42 21	%24 12	%18 9	
%28 14	%32 16	%24 12	%16 8	
%20 10	%28 14	%18 9	%34 17	
%28 14	%30 15	%14 7	%28 14	
%36 18	%16 8	%26 13	%22 11	
%26 13	%34 17	%22 11	%18 9	

:

%34

%42

% 30

%32

%24

%22

%34

%22

%28

( 22 - 4 )

<b>%44 22</b>	<b>%16 8</b>	<b>%8 4</b>	<b>%28 14</b>	
<b>%36 18</b>	<b>%18 9</b>	<b>%14 7</b>	<b>%32 16</b>	
<b>%52 26</b>	<b>%20 10</b>	<b>%12 6</b>	<b>%16 8</b>	
<b>%54 27</b>	<b>%16 8</b>	<b>%8 4</b>	<b>%22 11</b>	
<b>%46 23</b>	<b>%10 5</b>	<b>%6 3</b>	<b>%38 19</b>	
<b>%42 21</b>	<b>%26 13</b>	<b>%14 7</b>	<b>%18 9</b>	

:

( 22 - 4 )

%52

%54

%46

%38

%12

%14

%32

%26

%20

9 - 4 - 4

(23 -4)

%52 26	%48 24	
%62 31	%38 19	
%36 18	%64 32	
%22 11	%78 39	
%58 29	%42 21	
%78 39	%22 11	

:

%78

% 48

%64

%58

%78

%52

( 24 - 4 )

<b>%64 32</b>	<b>%36 18</b>	
<b>%78 39</b>	<b>%22 11</b>	
<b>%50 45</b>	<b>%10 5</b>	
<b>%56 28</b>	<b>%44 22</b>	
<b>%92 46</b>	<b>%8 4</b>	
<b>%80 40</b>	<b>%20 10</b>	

:

( 24 - 4 )

%92

%50

**10 - 4 - 4**

( 25 - 4 )

<b>%86 43</b>	<b>%14 7</b>	
<b>%62 31</b>	<b>%38 19</b>	
<b>%78 39</b>	<b>%22 11</b>	
<b>%88 4</b>	<b>%12 6</b>	
<b>%74 37</b>	<b>%26 13</b>	



<b>%96 48</b>	<b>%4 2</b>	
---------------	-------------	--

:

% 96

( 26 - 4 )

<b>%96 48</b>	<b>%4 2</b>	
<b>%88 44</b>	<b>%12 6</b>	
<b>%94 47</b>	<b>%6 3</b>	
<b>%82 41</b>	<b>%18 9</b>	
<b>%98 49</b>	<b>%2 1</b>	
<b>%100 50</b>	<b>% 0 0</b>	

:

( 26 -4 )

%100

% 82

**11 - 4 - 4**

**( 27-4 )**

<b>%38 19</b>	<b>%62 31</b>	<b>%0 0</b>	
<b>%38 19</b>	<b>%58 29</b>	<b>%4 2</b>	
<b>%26 13</b>	<b>%74 37</b>	<b>%0 0</b>	
<b>%6 3</b>	<b>%94 47</b>	<b>%0 0</b>	
<b>%22 11</b>	<b>%54 27</b>	<b>%24 12</b>	
<b>%48 24</b>	<b>%52 26</b>	<b>%0 0</b>	

:

% 94

%4

% 24

% 38

% 48 :

. % 26

( 28-4 )

<b>%68</b>	<b>34</b>	<b>%32</b>	<b>16</b>	<b>%0 0</b>
<b>%62</b>	<b>31</b>	<b>%38</b>	<b>19</b>	<b>%0 0</b>
<b>%76</b>	<b>38</b>	<b>%24</b>	<b>12</b>	<b>%0 0</b>
<b>%54</b>	<b>27</b>	<b>%46</b>	<b>23</b>	<b>%0 0</b>
<b>%76</b>	<b>38</b>	<b>%24</b>	<b>12</b>	<b>%0 0</b>
<b>%82</b>	<b>41</b>	<b>%18</b>	<b>9</b>	<b>%0 0</b>

:

(28-4)

%76 %82

. %68

%46

%24

12 - 4 - 4

( 29-4)

<b>%58 29</b>	<b>%42 21</b>	
<b>%66 33</b>	<b>%34 17</b>	
<b>%74 37</b>	<b>%26 13</b>	
<b>%36 18</b>	<b>%64 32</b>	
<b>%62 31</b>	<b>%38 19</b>	
<b>%78 39</b>	<b>%22 11</b>	

:

( 29-4 )

%66

%74

%78

% 36

%42

64

(30-4)

<b>%76 38</b>	<b>%24 12</b>	
<b>%66 33</b>	<b>%34 17</b>	
<b>%86 43</b>	<b>%14 7</b>	
<b>%52 26</b>	<b>%48 24</b>	
<b>%86 43</b>	<b>%14 7</b>	
<b>%94 47</b>	<b>%6 3</b>	

:

( 30- 4)

%94

**13 - 4 - 4**

(31 -4)


<b>%56 28</b>	<b>%44 22</b>	
<b>%64 32</b>	<b>%36 18</b>	
<b>%82 41</b>	<b>%18 9</b>	
<b>%74 37</b>	<b>%26 13</b>	
<b>%84 42</b>	<b>%16 8</b>	
<b>%96 48</b>	<b>%4 2</b>	

(31 -4)

%96

%44

(32-4)

<b>%66 33</b>	<b>%34 17</b>	
<b>%72 36</b>	<b>%28 14</b>	
<b>%88 44</b>	<b>%12 6</b>	
<b>%78 39</b>	<b>%22 11</b>	
<b>%92 46</b>	<b>%8 4</b>	
<b>%94 47</b>	<b>%6 3</b>	

:

( 32 -4 )

%88                    %92                    %94  
                                 .                    %66  
%28                    %34  
                                 .                    %6

14 - 4 - 4

( 33 -4 )

%26 13	%74 37	
%4 2	%96 48	
%28 14	%72 36	
%46 23	%54 27	
%54 27	%46 23	
%58 29	%42 21	

:

%96

( 34 - 4 )


<b>%24 12</b>	<b>%86 38</b>	
<b>%8 4</b>	<b>%92 46</b>	
<b>%24 17</b>	<b>%66 33</b>	
<b>%26 13</b>	<b>%74 37</b>	
<b>%24 17</b>	<b>%66 33</b>	
<b>%38 19</b>	<b>%62 31</b>	

:

**15 - 4 - 4**

**(35-4)**

<b>%28 14</b>	<b>%72 36</b>	
<b>%36 18</b>	<b>%64 32</b>	
<b>%38 19</b>	<b>%62 31</b>	
<b>%48 24</b>	<b>%52 26</b>	
<b>%46 23</b>	<b>%54 27</b>	
<b>%32 16</b>	<b>%68 34</b>	

:

**(36-4)**




<b>%22 11</b>	<b>%78 39</b>	
<b>%36 18</b>	<b>%64 32</b>	
<b>%24 12</b>	<b>%76 38</b>	
<b>%38 19</b>	<b>%62 31</b>	
<b>%18 9</b>	<b>%82 41</b>	
<b>%26 13</b>	<b>%74 37</b>	

% 52

%72

%82

%64

**16 - 4 - 4**

**( 37- 4)**

<b>%68 34</b>	<b>%32 16</b>	
<b>%44 22</b>	<b>%56 28</b>	
<b>%58 29</b>	<b>%42 21</b>	

<b>%76 38</b>	<b>%24 12</b>	
<b>%66 33</b>	<b>%34 17</b>	
<b>%46 23</b>	<b>%54 27</b>	

:

**(38 - 4)**

<b>%72 36</b>	<b>%28 14</b>	
<b>%76 38</b>	<b>%24 12</b>	
<b>%44 22</b>	<b>%56 28</b>	
<b>%48 24</b>	<b>%52 26</b>	
<b>%58 29</b>	<b>%42 21</b>	
<b>%64 32</b>	<b>%36 18</b>	

:



:

%76

( 40 -4 )

<b>%26 13</b>	<b>%74 37</b>	
<b>%36 18</b>	<b>%64 32</b>	
<b>%48 29</b>	<b>%42 21</b>	
<b>%28 14</b>	<b>%72 36</b>	
<b>%30 15</b>	<b>%70 35</b>	
<b>%18 9</b>	<b>%82 41</b>	

:

( 40 -4 )

36                      %74                      %82  
   %48

**18 - 4 - 4**

( 41 - 4 )

<b>%46 23</b>	<b>%54 27</b>	
<b>%56 28</b>	<b>%44 22</b>	
<b>%38 19</b>	<b>%62 31</b>	
<b>%66 33</b>	<b>%34 17</b>	
<b>%24 12</b>	<b>%76 38</b>	
<b>%48 24</b>	<b>%52 26</b>	

:

%76

% 66

( 42 - 4 )

<b>%26 13</b>	<b>%74 37</b>	
<b>%36 18</b>	<b>%64 32</b>	
<b>%38 19</b>	<b>%62 31</b>	
<b>%42 21</b>	<b>% 58 29</b>	
<b>%24 12</b>	<b>%76 38</b>	
<b>%28 14</b>	<b>%72 36</b>	

:

% 74

%76

% 58

% 72

% 42

**19 - 4 - 4**

**( 43-4 )**

<b>%48 24</b>	<b>%52 26</b>	
<b>%56 28</b>	<b>%44 22</b>	
<b>%32 16</b>	<b>%68 34</b>	
<b>%50 25</b>	<b>%50 25</b>	

<b>%66 33</b>	<b>%34 17</b>	
<b>%24 12</b>	<b>%76 38</b>	

:

%76

%50

%66

(44 - 4)

<b>%36 18</b>	<b>%64 32</b>	
<b>%32 16</b>	<b>%68 34</b>	
<b>%26 13</b>	<b>%74 37</b>	
<b>%44 22</b>	<b>%56 28</b>	
<b>%22 11</b>	<b>%78 39</b>	
<b>%16 8</b>	<b>%84 42</b>	

:

( 44 - 4 )

%56

%84



20 - 4 - 4

( 45 - 4 )

<b>%0 0</b>	<b>%0 0</b>	<b>%16 8</b>	<b>%0 0</b>	<b>%84 42</b>	
<b>%0 0</b>	<b>%12 6</b>	<b>%8 4</b>	<b>%16 8</b>	<b>%64 32</b>	
<b>%0 0</b>	<b>%0 0</b>	<b>%24 12</b>	<b>%4 2</b>	<b>%72 36</b>	
<b>%0 0</b>	<b>%0 0</b>	<b>%4 2</b>	<b>%0 0</b>	<b>%96 48</b>	
<b>%0 0</b>	<b>%0 0</b>	<b>%8 4</b>	<b>%0 0</b>	<b>%92 46</b>	
<b>%0 0</b>	<b>%2 1</b>	<b>%8 4</b>	<b>%0 0</b>	<b>%90 45</b>	

:

(45-4)

( )  
%90                      %92                      %96

(46 -4)

<b>%0 0</b>	<b>%4 2</b>	<b>%0 0</b>	<b>%0 0</b>	<b>%96 48</b>	
<b>%0 0</b>	<b>%0 0</b>	<b>%14 7</b>	<b>%0 0</b>	<b>%86 43</b>	

<b>%0 0</b>	<b>%0 0</b>	<b>%6 3</b>	<b>%10 5</b>	<b>%84 42</b>	
<b>%0 0</b>	<b>%0 0</b>	<b>%6 3</b>	<b>%0 0</b>	<b>%94 47</b>	
<b>%0 0</b>	<b>%0 0</b>	<b>%36 18</b>	<b>%0 0</b>	<b>%64 32</b>	
<b>%0 0</b>	<b>%0 0</b>	<b>%8 4</b>	<b>%0 0</b>	<b>%92 46</b>	

:

**%96**

**%64**

**21 - 4 - 4**

**( 47 - 4 )**

<b>%0 0</b>	<b>%0 0</b>	<b>%0 0</b>	<b>%8 4</b>	<b>%92 46</b>	
<b>%0 0</b>	<b>%0 0</b>	<b>%2 1</b>	<b>%0 0</b>	<b>%98 49</b>	
<b>%0 0</b>	<b>%0 0</b>	<b>%2 1</b>	<b>%0 0</b>	<b>%98 49</b>	
<b>%0 0</b>	<b>%0 0</b>	<b>%0 0</b>	<b>%0 0</b>	<b>%100 50</b>	
<b>%0 0</b>	<b>%2 1</b>	<b>%4 2</b>	<b>%0 0</b>	<b>%94 47</b>	
<b>%0 0</b>	<b>%0 0</b>	<b>%0 0</b>	<b>%4 2</b>	<b>%96 48</b>	

:

(47 - 4)

(48 - 4)

<b>%0 0</b>	<b>%0 0</b>	<b>%0 0</b>	<b>%16 8</b>	<b>%84 42</b>	
<b>%0 0</b>	<b>%0 0</b>	<b>%10 5</b>	<b>%16 8</b>	<b>%74 37</b>	
<b>%0 0</b>	<b>%0 0</b>	<b>%0 0</b>	<b>%4 2</b>	<b>%96 48</b>	
<b>%0 0</b>	<b>%0 0</b>	<b>%2 1</b>	<b>%0 0</b>	<b>%98 49</b>	
<b>%0 0</b>	<b>%0 0</b>	<b>%8 4</b>	<b>%8 4</b>	<b>%84 42</b>	
<b>%0 0</b>	<b>%0 0</b>	<b>%4 2</b>	<b>%0 0</b>	<b>%96 48</b>	

:

%98

%74

**22 - 4 - 4**

(49-4)


<b>% 24 12</b>	<b>%6 3</b>	<b>%2 1</b>	<b>%16 8</b>	<b>%52 26</b>	
<b>%0 0</b>	<b>%0 0</b>	<b>%0 0</b>	<b>%16 8</b>	<b>%64 32</b>	
<b>%0 0</b>	<b>%0 0</b>	<b>%0 0</b>	<b>%18 9</b>	<b>%82 41</b>	
<b>%6 3</b>	<b>%4 2</b>	<b>%0 0</b>	<b>%32 16</b>	<b>%58 29</b>	
<b>%10 5</b>	<b>%0 0</b>	<b>%0 0</b>	<b>%14 7</b>	<b>%76 38</b>	
<b>%14 7</b>	<b>%2 1</b>	<b>%4 2</b>	<b>%38 19</b>	<b>%96 48</b>	

:

(49 - 4)

( 50-4)

<b>%0 0</b>	<b>%0 0</b>	<b>%0 0</b>	<b>%44 22</b>	<b>%56 28</b>	
<b>%4 2</b>	<b>%0 0</b>	<b>%0 0</b>	<b>%34 17</b>	<b>%62 31</b>	
<b>%18 9</b>	<b>%12 6</b>	<b>%8 4</b>	<b>%18 9</b>	<b>%44 22</b>	
<b>%2 1</b>	<b>%0 0</b>	<b>%0 0</b>	<b>%64 32</b>	<b>%34 17</b>	

<b>%6 3</b>	<b>%0 0</b>	<b>%0 0</b>	<b>%22 11</b>	<b>%72 36</b>	
<b>%10 5</b>	<b>%4 2</b>	<b>%0 0</b>	<b>%44 22</b>	<b>%42 21</b>	

:

% 72

%64

% 18

**5 - 4**

:

39 - 30

- 1

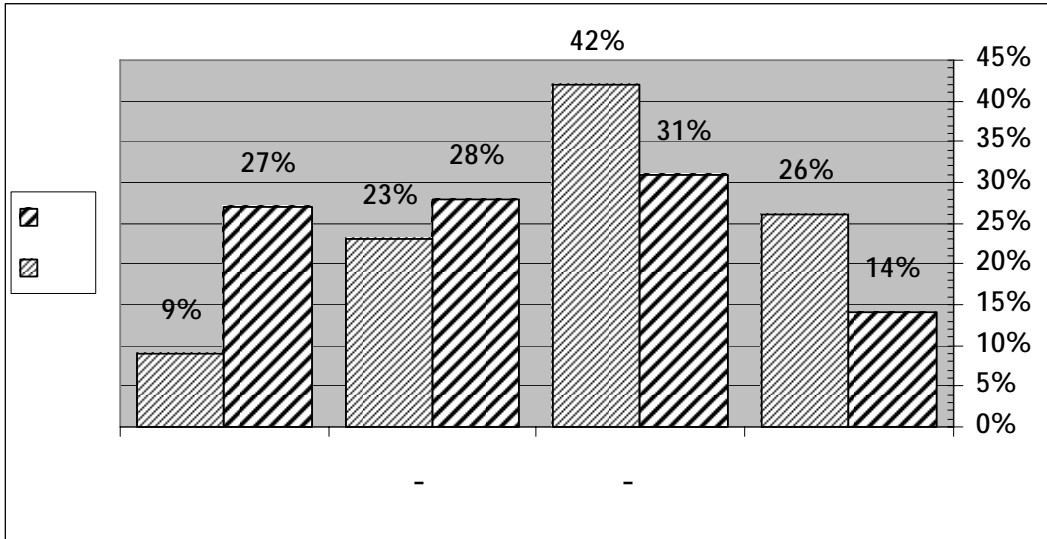
( 1-4 )

% 31      300      92

.      % 42      125

39    30

( 1 - 4 )



:

- 2

- 3

% 18

. %16

%55

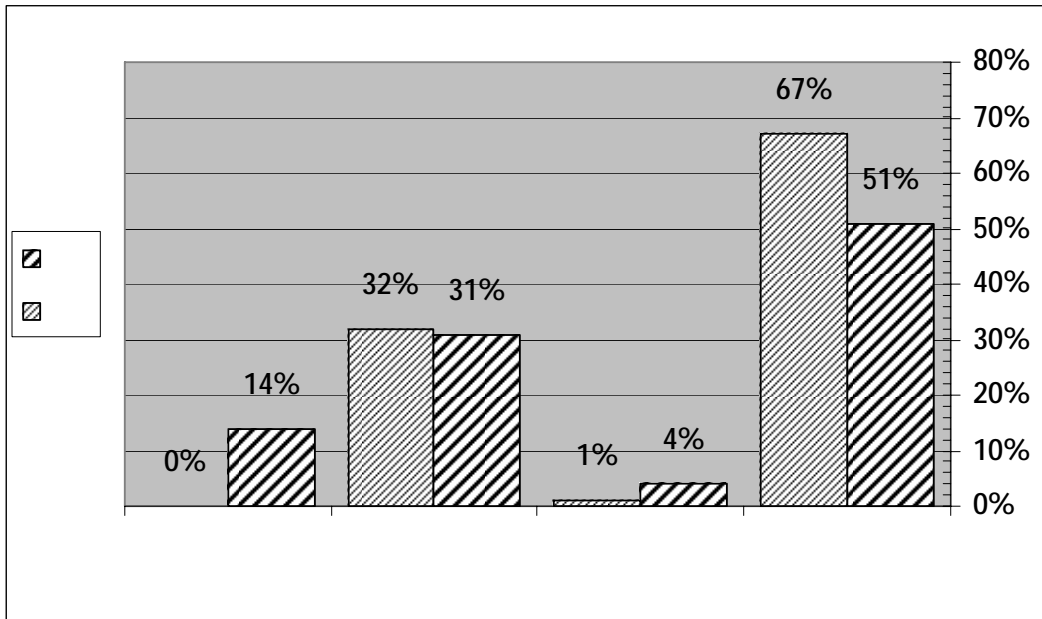
%56

- 4

( 15 - 4 )

. ( 16 - 4 )

( 2 - 4 )

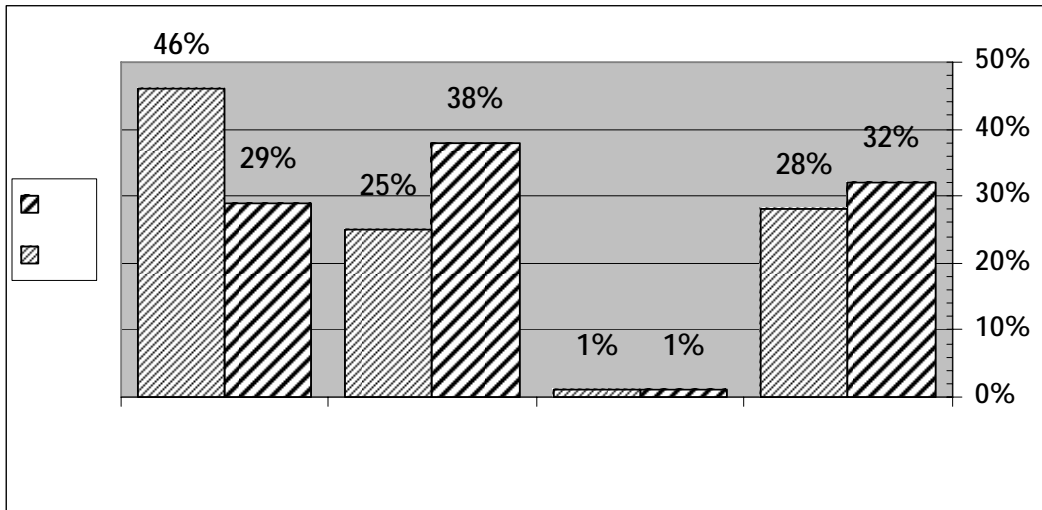


:

- 5

( 3 - 4 )

( 3 - 4 )



:

- 6

.

- 7

( 48 - 4 ) ( 47 - 4 )  
· ( 50 - 4 ) ( 49 - 4 )  
( )



**-5**

**5-: 1**

25

300

300

45

- .
- 5- . 2
- 5- 2 -: 1
- :
1. .
- 2.
- 3.
- 4.
5. .
- 6.
- 7.
- 8.
- 9.

:

1.

2.

3.

..

- 4

- 5

- 6

**5-:**

**3**

:

1.

2.

3.

4.

5.

:

:

:

:

. 1991

:

:

(1987)

.

50

(1976)

.

(1992)

.

(1984)

.

(1994)

( 1993 )

.

(1985)

.

(1989)

.

(1998)

.

(2001 )

.

(1989 )

.

(1994)

(1990)

.

(1994)

.

(1986)

21

(1985)

.

(1992)

.

(1996 )

.

46

.

(2001)

(1986)

.

(1992)

.

(1996 )

80

.

(1994)

.

(1995)

.

(1988)

.

(1993 )

.

(1996)

(1984)

.

(1987 )

30

.

(1982)

.



(1998)

.

(1996)

.

(1999)

.

( 1992 )

69

.

(1988)

.

(1991 )

.

(2001 )

.

4

(1981 )

.

(1987)

51

.

(1989 )

.

(1998)

.

:

:

(2000)

.

(1999 )

.

(2000)

.

(2001)

.

(1998 )

.

( 1988 )

.

(1998 )

.

(2001 )

.

(1998 )

.

(1996)

.

(1990)

.

(2001)

.

.

(1999)

- :
- Art Ulene (1996). Book of Food Counts. A very publishing Group, Garden City N.Y.
- ASI Food Safety Consultants (1986). Guidelines for Operation a Retail Food Store Using HACCP Principles. St. Louis, Missouri.
- ASI Food Safety Consultants (1986). Guidelines for Food Processing Plants. St. Louis, Missouri.
- Blendford, D. (1985). Natural Food Colours. Food, July, 1985, 19-21.
- Buchanan, R.L. and Doyle, M.P. (1997). Foodborne Disease Significance of Escherichia coil 1570:H7 and other Enterohemorrhagic E. coli. Food Technology. October, 51, 69-76.
- Boyce, J. and Shankin, C. (1998). A practical Application of HACCP in a Refrigerated Food Manufacturing Operation. Journal of Foodservice System, 10, 185-196.
- Daniels, R. W. (1998). Home Food Safety. Food Technology, February, 54-56.
- Demetrakakes, P. (1999). Backlash: Recalls Can be Traumatic Experiences. Food Processing. August, 16.
- Deshpands, S.S. (1994). Immunodiagnostics in Agricultural, Food, and Environmental Quality Control. Food Technology, June, 136.
- FAO/WHO (1998). Recommended International Code of Practice: General Principles of food bygiene. CAC/RCP 1969, Rev. 3, Roma, Italy.
- FAO/WHO (1998). Guidance on Regulatory Assessment of HACCP: Consultation on the Role of Government Agencies in Assessing HACCP. Geneva, 2-6 June 1998.
- FAO/WO (1999). Strategies for Implementing HACCP in small and/or less Developed Businesses: Report of a HWO Consultation in Collaboration with the Ministry of Health, Welfare and Sport, The Netherlands. The Hague, 16-19 June 1999.
- Farber, J.M. and Hughes, A. (1995). General Guidelines for the Safe Handling of Foods. Dairy, food and environmental sanitation, 15, 70-78.
- Food Technology (1986). Food Colors. A scientific status summary by the institute of food technologists expert panel on food safety & nutrition, July, 1986, 49-56.

- Food Engineering (1998). Food Safety in America: Food Plants at A Critical Juncture. July/August, 77.
- Food Review (1995). Chilled Storage, 25.
- Fox, B.A. and Cameron, A.G. Hodder and Stoughton (1977). Food Science: A chemical approach. London.
- Good Catering Practice: use of manufactured meals in catering (1994). Science and technology today, 172-175.
- Hasler, C, (1998), functional Foods: Their Role in Disease Prevention and Health Promotion. Food Technology, 52, 63, 70.
- International Standard: Quality management and quality assurance standards-Guidelines for selection and use. First edition 7891-30-51. Reference number ISO 9000: 1987 (E).
- Jay, J, M. (1978). Modern Food Microbiology. Second Edition. Van Nostrand Reinhold Co., NY.
- Karl Ropkins and Agis J. Beck (2000). Evaluation of worldwide Approaches to the use HACCP to Control Food safety. Trends in Food Science & Technology, 11, 10-21.
- Kilen, Joel (1993). A comparison of the environmental attitudes, and behaviors of native-born and proeign-born U.S. residents. Journal of interdisciplinary studies. Vol 21 (565-580)
- Kroll, B.J. (1990). Evaluating Rating Scales for Sensory Testing with Children. Food Technology, November, 78. Kuwait Aviation Services. Hygiene in Food Catering.
- Lopez, Azpiazu, (2000) stages of dietary change and nutrition attitude in the Spanish population. University of Navarra, Pomplona, Spain.
- Mary Seaver (1999). Microbiological Standards & Guidelines for Fish and Fishery Products, Issue No.: 6, WEFTA. Mermelstein, N.H. (1993) Controlling E. coli O157:H7 in Meat. Food Technology, April, 90-91.
- Motarjemi, Y., Kaferstein, F., Moy, G., Miyagishima, K., Miyagawa, S, and Reilly, A. (1995). Food Technologies and Public Health: Food safety issues by Food safety Unit, Division of Food and Nutrition, World Health Organization. WHO/FNU/FOS/95.12.
- Motarjemi, Y., Kaferstein, F., Moy, G., Miyagishima K. (1996). Importance of HACCP for Public Health and Development The role of The world Health Organization, Food Control, 7, 77-85.

- Nielsen, S. S. (1998). Food Analysis. An Aspen Publication.
- Norman G. Martin (1989). Personal Hygiene and Food Handling in: Principles of food sanitation, second edition, An AVI Book, 59-70.
- Park, D.L. (1993). Controlling Aflatoxin in Food and Feed. Technology. October, 92-96.
- Pearson. M.A. and Dutson R. T. (1995) HACCP in Meat, Poultry and Fish Processing: Advances in meat research series vol. 01. Blackie Academic & Professional, London.
- Pillsbury Company (1973): Food safety through the hazard analysis and critical control point system, contract no. FDA 72-59, Pillsbury company, Research & Development Department, Minneapolis, USA.
- Potter, A., N.N.N (1988). Food additives, Wholesomeness, and Consumer protection: in food science, Fourth edition. An AVI Publication, 638-688.
- Smith Anne (1989) Knowledge opinions and attitudes of the cancerian island population towards nutrition, Educational Horizon, 65 (106-133).
- Smith, J. Blackie (1991). Food Additives User's Handbook. Glasgow and London.
- Stauffer, J.E. (1988). Quality Assurance of Food Ingredients, Processing and Distribution, Food & nutrition press, Inc., USA.
- Total Quality Management in The Food Industry (1999): Handout for an in-house training course 1-5 May 1999. Kuwait Institute for Scientific Research.
- West, A. (1994). Good Catering Practice: Use of Manufactured Meals in Catering. Food Science and Technology Today, 172.
- Wolf, I.D. (1992). Critical Issues in Food Safety. Food Technology, January, 76.
- Woodburn, M. and Raab, C. (1993). Product Care Directions on Food Labels: Status and Needs. Food technology, February, 97.
- Wright, Sharon (1989) Summer, youth self-protections: comprehensive Approach to a major A.H. Issue Journal of Extension 27, 16-18.

- 2

- 1





: - 1

.....

/

.

.



:

**-1**

$$\begin{array}{l} \square \\ \square \end{array} -2$$

$$\begin{array}{l} \square \\ -\square \end{array} -1$$

$$\square$$

$$\square$$

**-2**

$$\square$$

2

$$\square -1$$

$$\square$$

**-3**

-3

$$\square$$

**4**

-2

$$\square -1$$

$$\square$$

**5**

$$\square -2$$

$$\square -1$$

$$\square -3$$

$$\square -3$$

**-6**

-2

-1

-4

-3

**-7**

-2

-1

-4

-3

**-8**

-2

- -1

-4

-3

**-9**

- 2

-1

**10-**

-2

-1

**11**

-2

-1

**-12**

-2

-1

( - )

**-13**

-2

-1

**-14**

-2

-

-15

$$-2 \quad \square \quad - \square$$

**-16**

$$-2 \quad \square \quad -1 \quad \square$$

**-17**

$$-2 \quad \square \quad -1 \quad \square$$

- 18

$$-2 \quad \square \quad \square$$

**19**

$$-2 \quad \square \quad -1 \quad \square$$

**20-**

$$-2 \quad \square \quad -1 \quad \square$$

**-21**

$$-2 \quad -\square \quad \square$$

**22**

$$\begin{array}{r} -2 \square \\ \square -4 \\ -5 \end{array} \quad \begin{array}{r} -\square \\ \square -3 \\ \square \end{array}$$

- 2

**1972      15**

1984